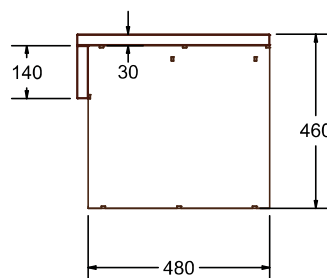
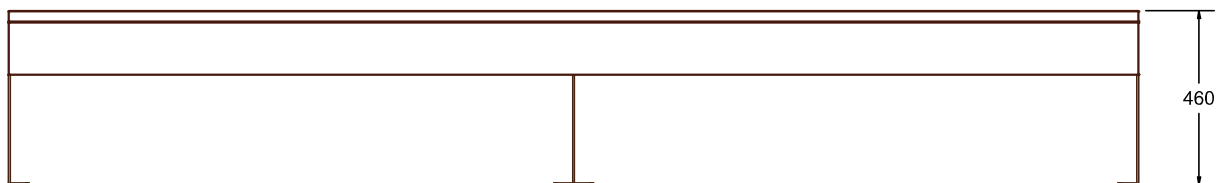




**Max Dimensions:**

Height: 460 mm | Length Bench: 3000 mm

Width: 510 mm | Weight of steel: 66 Kg

**ZEN BENCH L3000 without backrest**

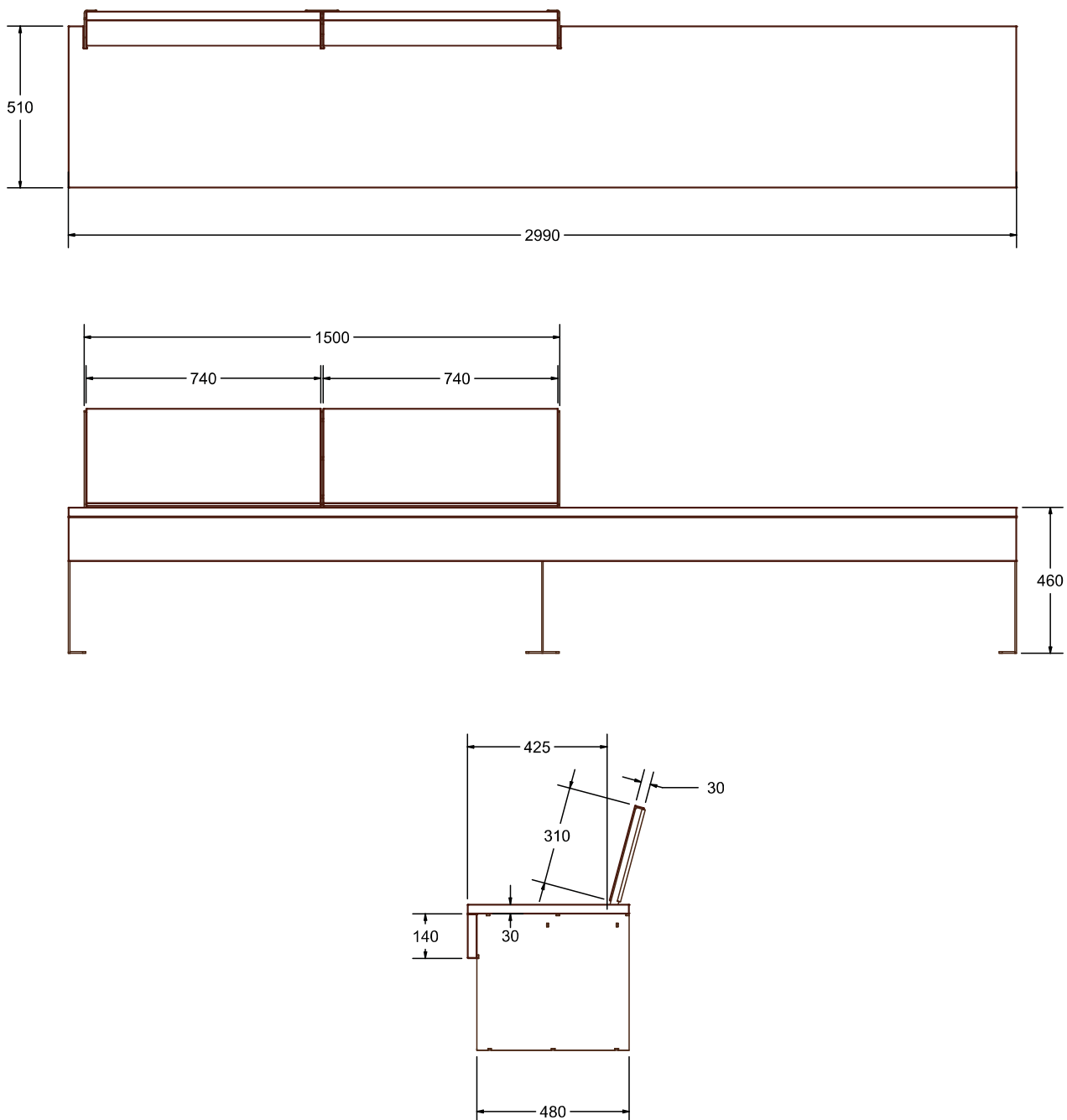
The bench ZEN is made in a steel sheet of 50/10 thickness, provided with 3 strong supportive legs and an exotic wood seat, 30 mm thick, fixed to the load-bearing structure with chipboard screws.

For the realization of this product, Steel EN10111DD11 is used and later treated with a cycle of sandblasting, cataphoresis and powder coating. Such cycle is meant to guarantee the protection of the painted products, in an environment of C4 corrosion class, as requested by the UNI regulations EN ISO 12944-2. The products are eventually polyester-powder coated with RAL colours at choice.

The wood used is either Iroko or Okume, treated with natural, water-repellent, UV ray resistant oils.

**Max Dimensions:**

Height: 460 mm | Height with backrest: 771 mm | Length Bench: 3000 mm  
 Length backrest: 1500 mm | Width: 510 mm | Weight of steel: 70 Kg

**ZEN BENCH L3000 with backrest**

The bench ZEN with backrest is made in a steel sheet of 50/10 thickness, provided with 3 strong supportive legs and an exotic wood seat, 30 mm thick, fixed to the load-bearing structure with chipboard screws. The single backrest (bench 2 mt/3mt), the double one or the counterposed one (bench 3 mt), is made with the same wood of the seat, fixed on 2 or 3 strong supports in steel sheet, 50/10 thick.

For the realization of this product, Steel EN10111DD11 is used and later treated with a cycle of sandblasting, cataphoresis and powder coating. Such cycle is meant to guarantee the protection of the painted products, in an environment of C4 corrosion class, as requested by the UNI regulations EN ISO 12944-2. The products are eventually polyester-powder coated with RAL colours at choice.

The wood used is either Iroko or Okume, treated with natural, water-repellent, UV ray resistant oils.