



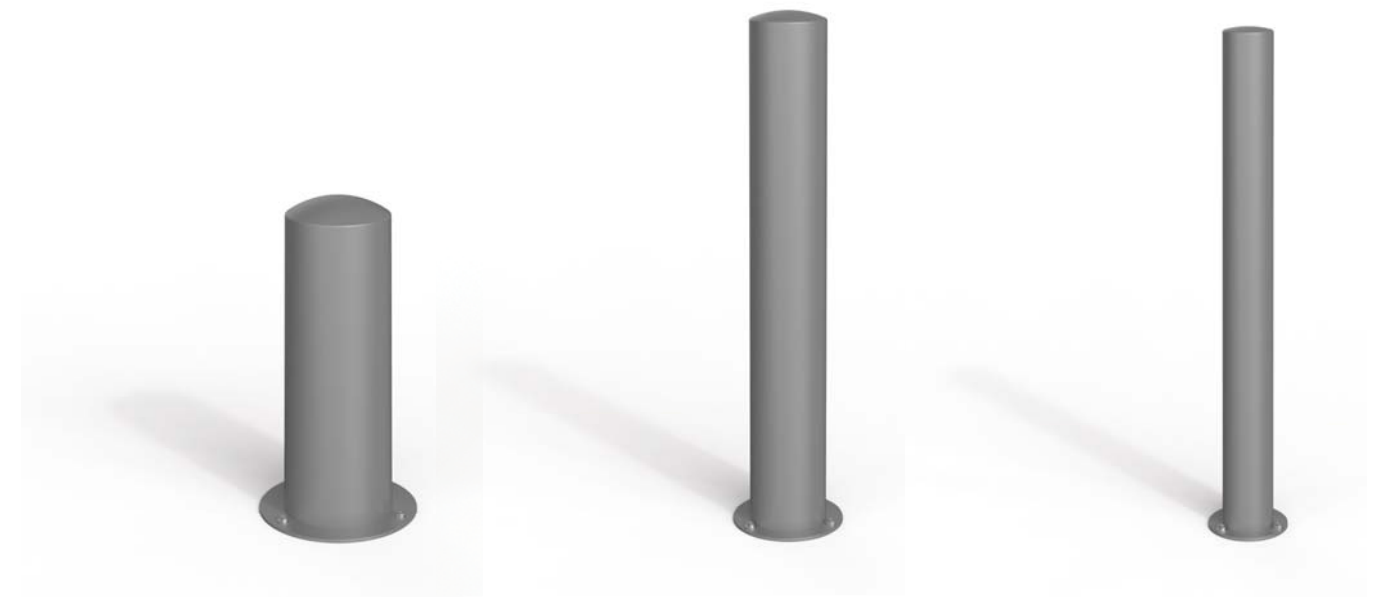
KAISER  
BOLLARD 261





Dissuasore pedonale in tubo d'acciaio zincato e verniciato con terminale bombato.

Pedestrian bollard made of galvanized and powder coated steel tube with rounded terminal.



Borne piétonne en tube d'acier galvanisé et thermolaqué avec borne arrondie.

Bolardo en tubo de acero galvanizado y pintado con polvos con terminal redondeado.

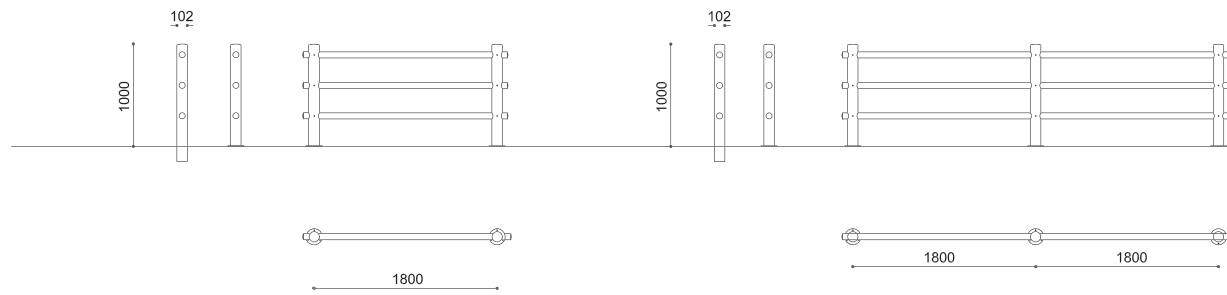
**F** FLANGIATO O INGHISATO / BASE PLATED OR EMBEDDED  
SUR PLATINE OU A SCELLER / CON BASE DE ANCLAJE O ANCLADO AL SUELO

**D** DISEGNI / DRAWINGS / PLANS / DIBUJOS: p. 357

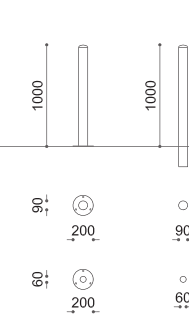
KAISER

BOLLARD

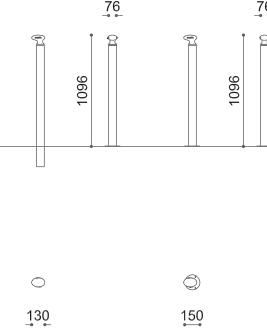
GRAF



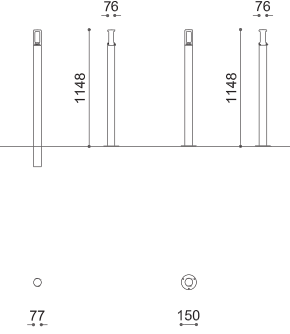
TOMMY



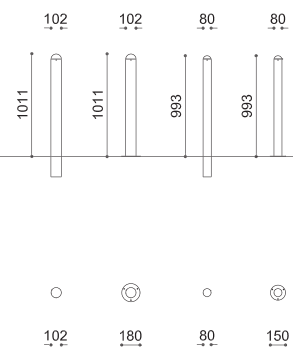
BITTA



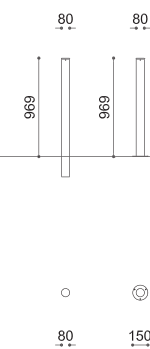
KARL



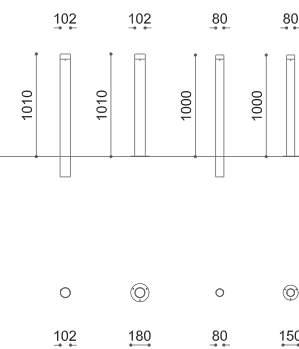
PALETTE S



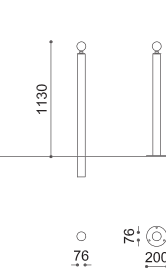
PALETTE P



PALETTE C



STILUS



KAISER

