

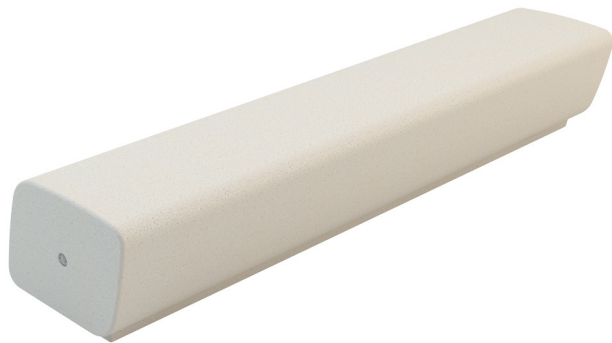
“LOUNGE L 2340” Bench

Sheet code: PAAR071

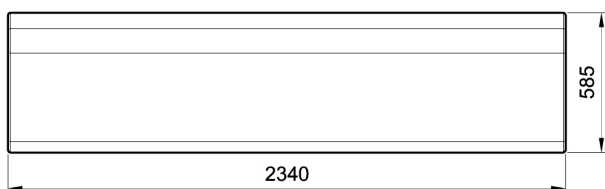
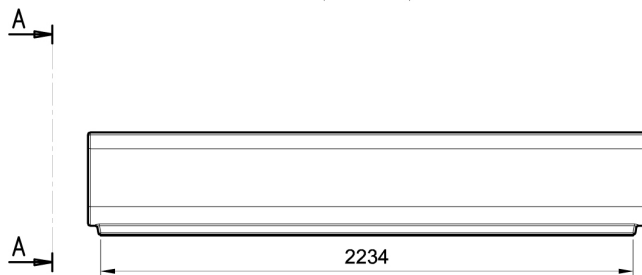
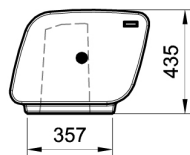
Drawing code:

Revision: 11/01/2019

Designer:
Bellitalia Design Department



A-A



Product: Linear modular bench model “LOUNGE L 2340” for four, composed by a monolithic seat.

Dimensions: length: 2340 mm;
width: 585 mm;
height: 435 mm;
total weight: about 870 kg.

Material: The bench can be manufactured using reconstituted natural marble stones or white granite conglomerate. The seat is manufactured in only one concrete casting.

Reinforcing: The bench is reinforced and endowed with bushes that permit its lifting, and that are covered with a Bellitalia plate after the placement.

Finishing: The bench's surfaces can be sandblasted or natural smooth, and are then covered with a transparent anti-decay coating, or, upon request, with anti-graffiti products. All edges are rounded or made blunt.

Handling: Use appropriate equipment when handling.

Installation: Simply lay the bench on the flooring, accordingly with the chosen layout.